

COMZ GURA



# TRADING SMART PATTERN

INCLUDES CANDLESTICK + BREAKOUT PATTERN'S

Akash Kundur

COMZ GURA

## DISCLAIMER

THE INFORMATION PROVIDED IN THIS BOOK IS FOR EDUCATIONAL PURPOSES ONLY. IT IS NOT INTENDED TO BE A SOURCE OF FINANCIAL OR LEGAL ADVICE. MAKING ADJUSTMENTS TO A FINANCIAL STRATEGY OR PLAN SHOULD ONLY BE UNDERTAKEN AFTER CONSULTING WITH A PROFESSIONAL. THE PUBLISHER AND THE AUTHOR MAKE NO GUARANTEE OF FINANCIAL RESULTS OBTAINED BY USING THIS BOOK.

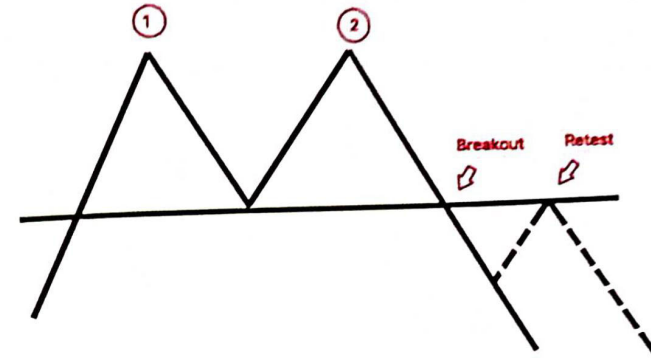
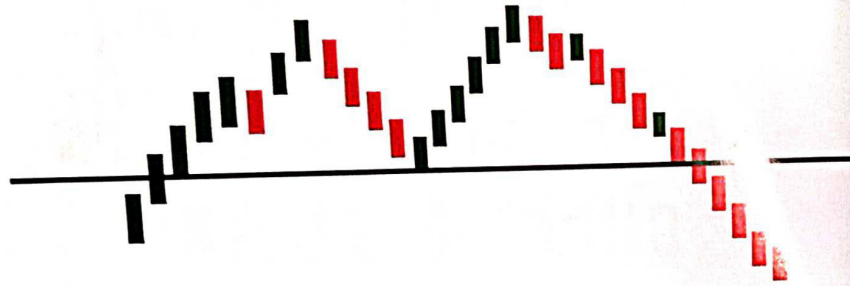
WE MAKE NO GUARANTEES AS TO THE ACCURATENESS, QUALITY, OR COMPLETENESS OF THE INFORMATION AND WE SHALL NOT BE RESPONSIBLE OR LIABLE FOR ANY ERRORS, OMISSIONS, OR INACCURACIES IN THE INFORMATION OR FOR ANY USER'S RELIANCE ON THE INFORMATION. USER IS SOLELY RESPONSIBLE FOR VERIFYING THE INFORMATION AS BEING APPROPRIATE FOR USER'S PERSONAL USE, INCLUDING WITHOUT LIMITATION, SEEKING THE ADVICE OF A QUALIFIED PROFESSIONAL REGARDING ANY SPECIFIC FINANCIAL QUESTIONS A USER MAY HAVE. WE ARE NOT A SECURITIES BROKER/DEALER OR AN INVESTMENT ADVISOR.

**" WE DON'T HAVE  
TO BE SMARTER  
THAN THE REST,  
WE JUST HAVL TO  
BE MORE  
DISCIPLINED THAN  
THE REST"**

**-warren buffet**

**LET'S LEARN VARIOUS  
CHART PATTERNS**

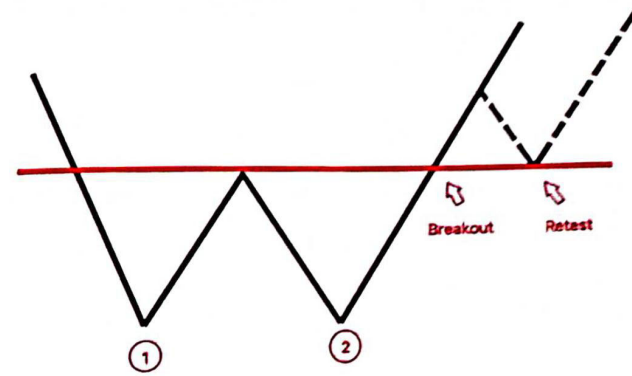
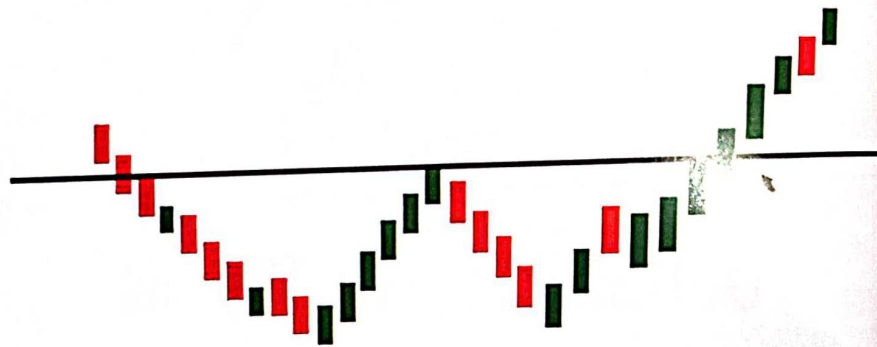
## DOUBLE TOP WITH CANDLESTICK CHART



## DOUBLE TOP PATTERN

A double top is an extremely bearish technical reversal pattern that forms after an asset reaches a high price **two consecutive times** with a moderate decline between the two highs. It is confirmed once the **asset's price falls below a support level** equal to the low between the two prior highs.

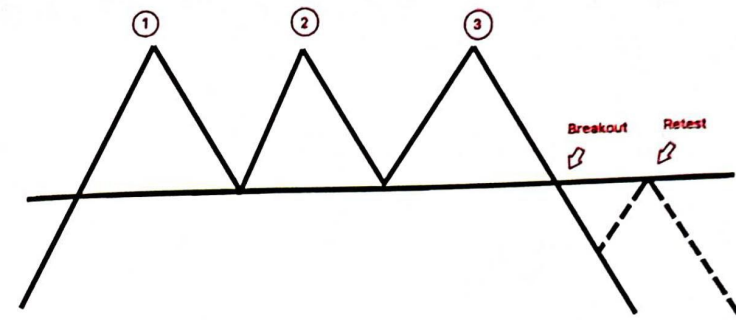
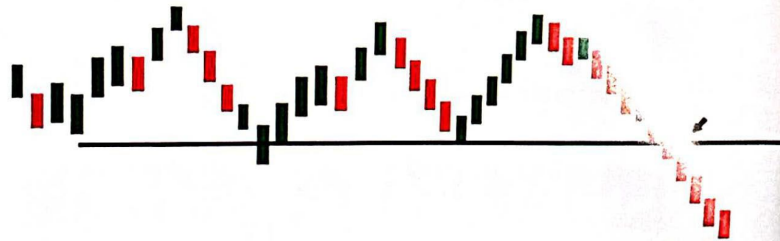
## DOUBLE BOTTOM WITH CANDLESTICK CHART



## DOUBLE BOTTOM PATTERN

A double bottom is an extremely bullish technical reversal pattern that forms after an asset reaches a low price **two consecutive times** with a moderate support between the two lows. It is confirmed once the **asset's price go above a resistance level** equal to the high between the two prior lows.

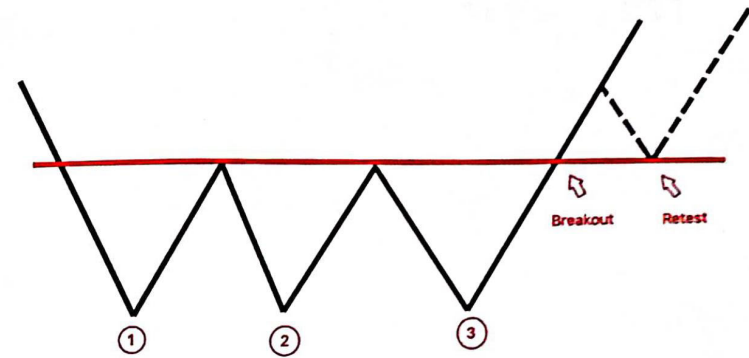
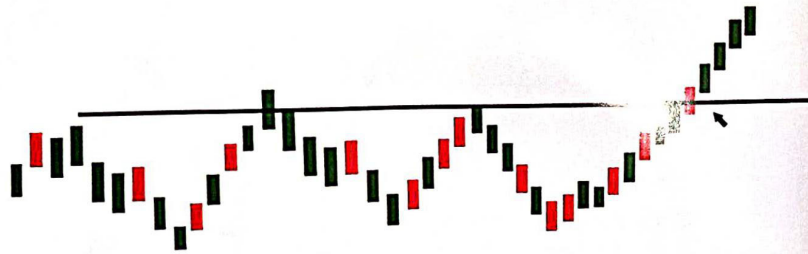
## TRIPPLE TOP WITH CANDLESTICK CHART



## TRIPPLE TOP PATTERN

A tripple top is an extremely bearish technical reversal pattern that forms after an asset reaches a high price **three consecutive times** with a moderate decline between the three highs. It is confirmed once the **asset's price falls below a support level** equal to the low between the three prior highs.

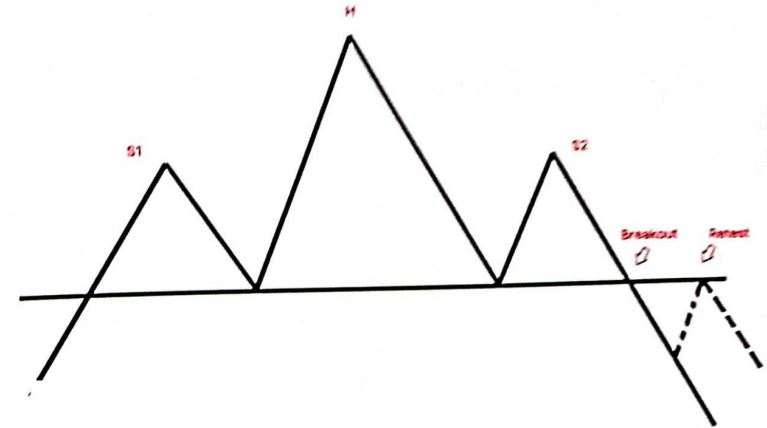
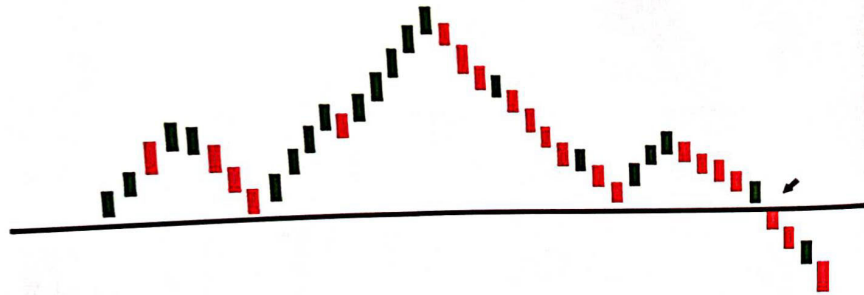
## TRIPPLE BOTTOM WITH CANDLESTICK CHART



## TRIPPLE BOTTOM PATTERN

A tripple bottom is an bullish technical reversal pattern that forms after an asset reaches a low price **three consecutive times** with a moderate support between the three lows. It is confirmed once the **asset's price go above a resistance level** equal to the high between the three prior lows.

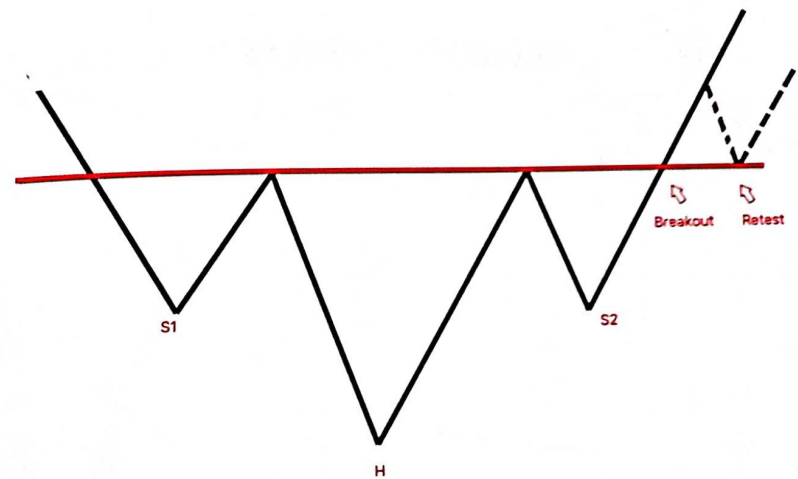
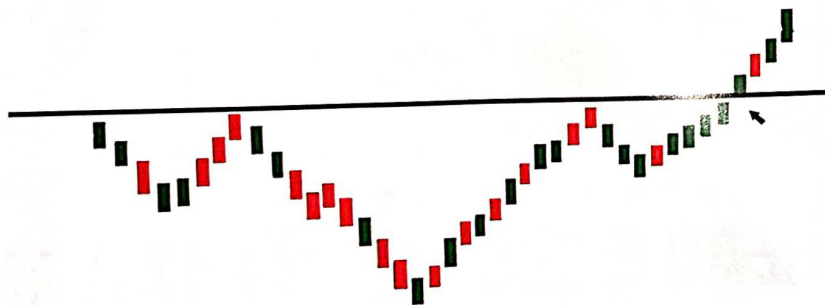
## HEAD AND SHOULDER WITH CANDLESTICK CHART



## HEAD & SHOULDER PATTERN

A head & shoulder pattern is a chart formation that appears as a baseline with three peaks, where the **outside two are similar in height and the middle is highest** & breakout confirmed once asset breaks support level & it **resembles with human head and shoulder** shape that's why it is called as head & shoulder

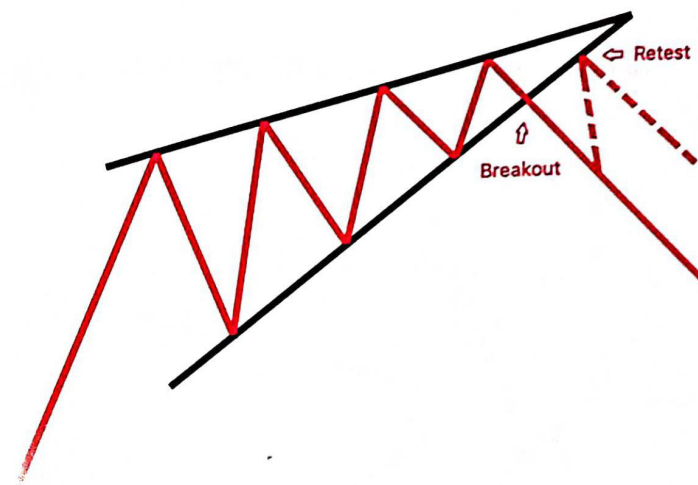
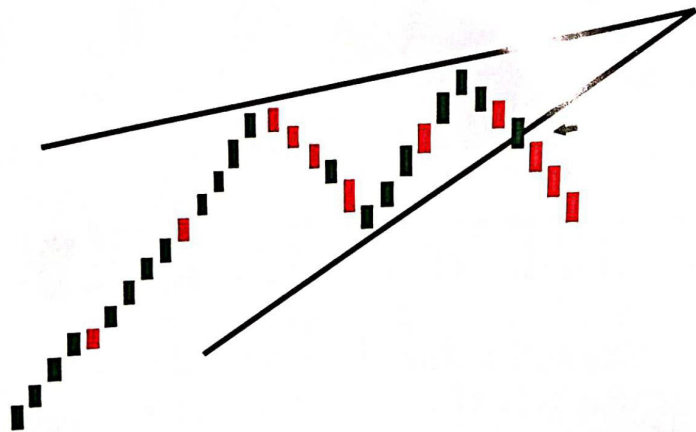
## INVERTED HEAD AND SHOULDER WITH CANDLESTICK CHART



## INVERSE HEAD & SHOULDER

An inverse head and shoulders is similar to the standard head and shoulders pattern, but inverted: with the head and shoulders top used to predict reversals in downtrends. The price falls to a trough and then rises; the price falls below the previous trough and then rises again; finally, the price falls again but not as far as the second trough. Once the final trough is made, the price heads upward & breaks resistance

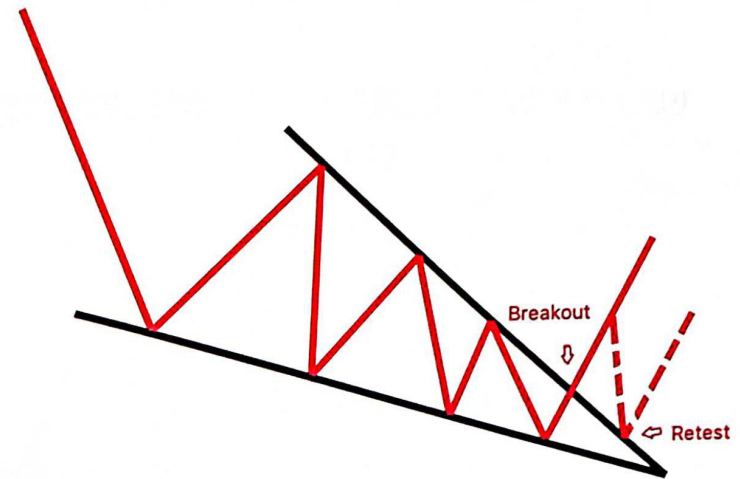
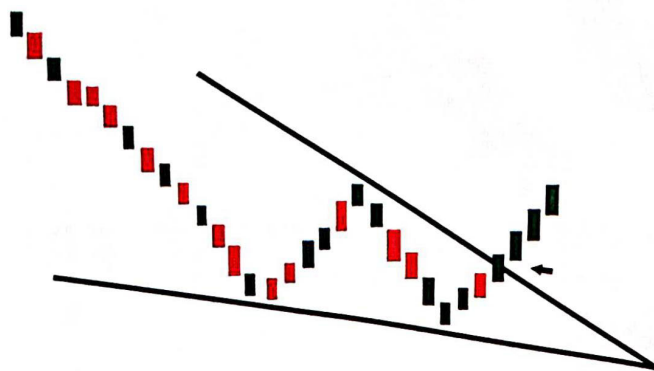
## RISING WEDGE WITH CANDLESTICK CHART



## RISING WEDGE PATTERN

The rising wedge is a technical chart pattern used to identify possible trend reversals. The pattern appears as an **upward-sloping price chart featuring two converging trendlines**. It is usually accompanied by decreasing trading volume. Breakout confirmed once it breaks support trendline goes downward

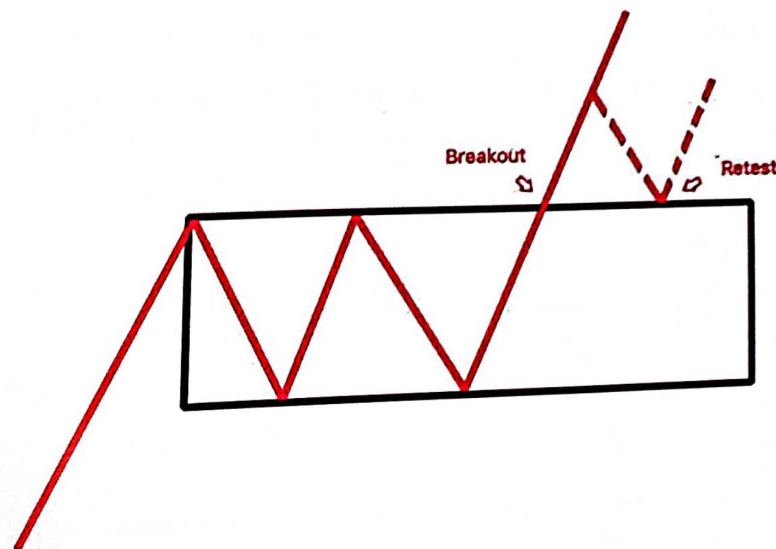
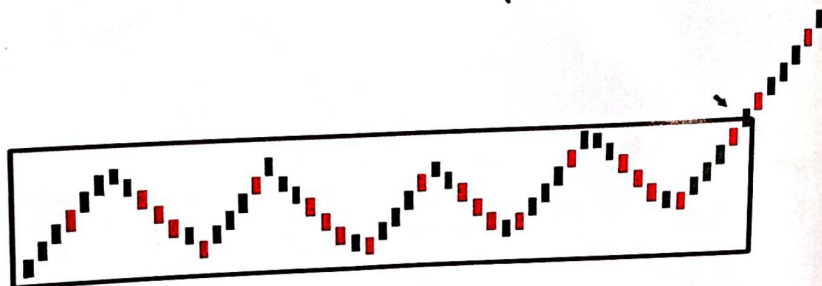
## FALLING WEDGE WITH CANDLESTICK CHART



## FALLING WEDGE PATTERN

The falling wedge pattern is characterized by a chart pattern which forms when the market **makes lower lows and lower highs with a contracting range**. When this pattern is found in a downward trend, it is considered a reversal pattern, breakout confirmed once it breaks resistance trendline and goes upward direction

## BULLISH RECTANGLE WITH CANDLESTICK CHART

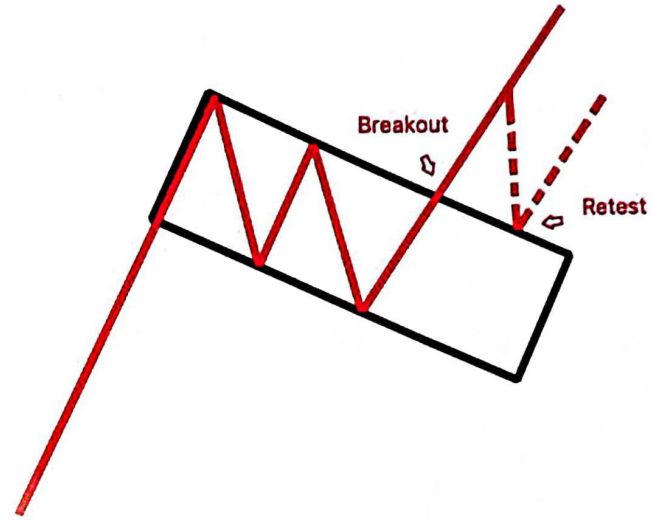
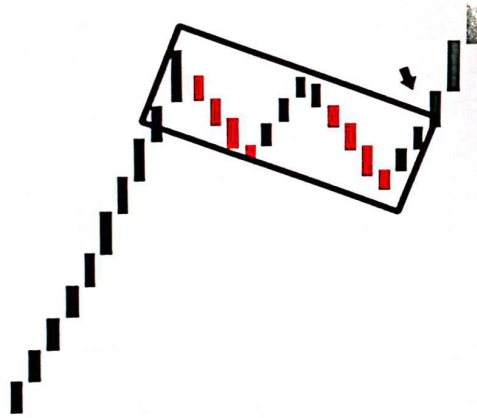


## BULLISH RECTANGLE

The bullish rectangle is a continuation pattern that occurs when a price pauses during a strong trend and temporarily bounces between two parallel levels before the trend continues, breakout confirmed once it breaks its resistance & goes in upward direction



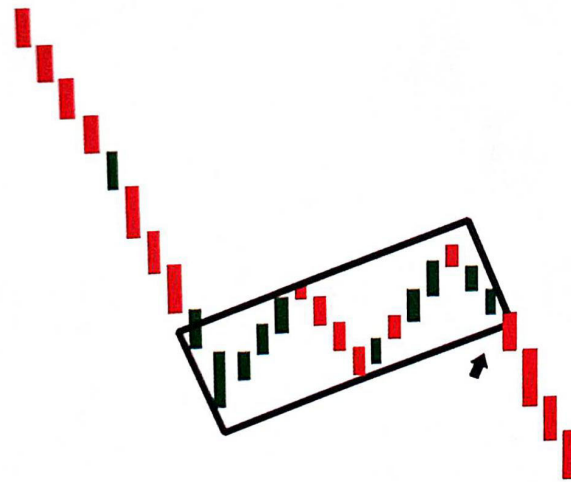
## BULLISH FLAG WITH CANDLESTICK CHART



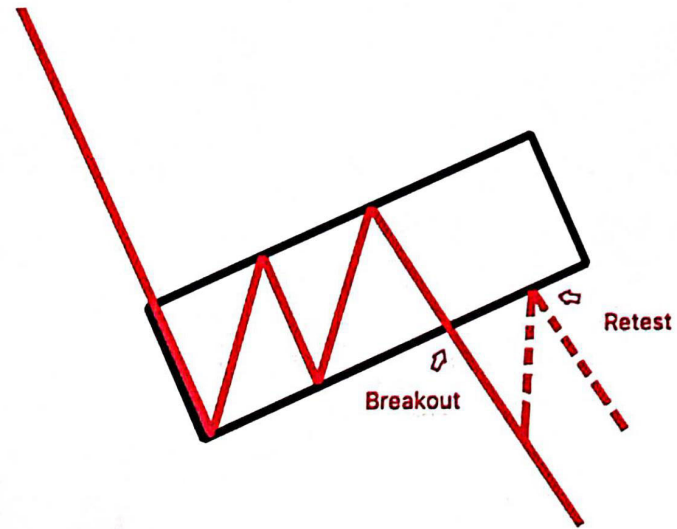
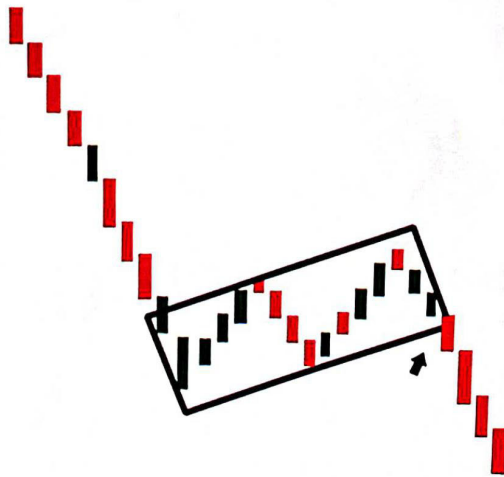
## BULLISH FLAG PATTERN

The bullish flag formations are found in stocks with strong uptrends and considered good continuation patterns. They are called bull flags because the pattern resembles a flag on a pole. The pole is the result of a vertical rise in a chart & the flag results from a period of consolidation, breakout confirmed once it breaks from upper side of flag

## BEARISH FLAG WITH CANDLESTICK CHART



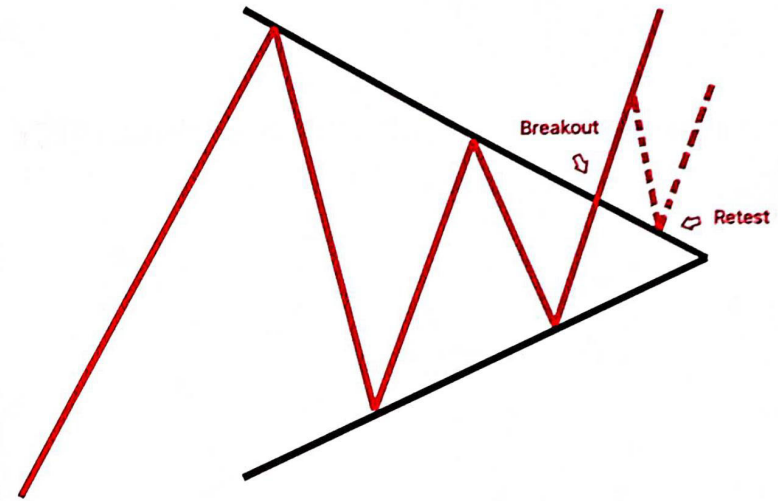
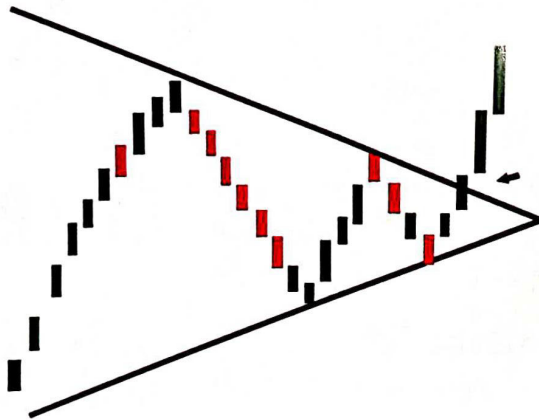
## BEARISH FLAG WITH CANDLESTICK CHART



## BEARISH FLAG PATTERN

The bearish flag is an upside down version of the bull flag. It has the same structure as the bull flag but inverted. The flagpole forms on an almost vertical panic price drop as bulls get blindsided from the sellers, then a bounce that has parallel upper and lower trendlines, which form the flag, breakout confirmed once chart break from lower trendline.

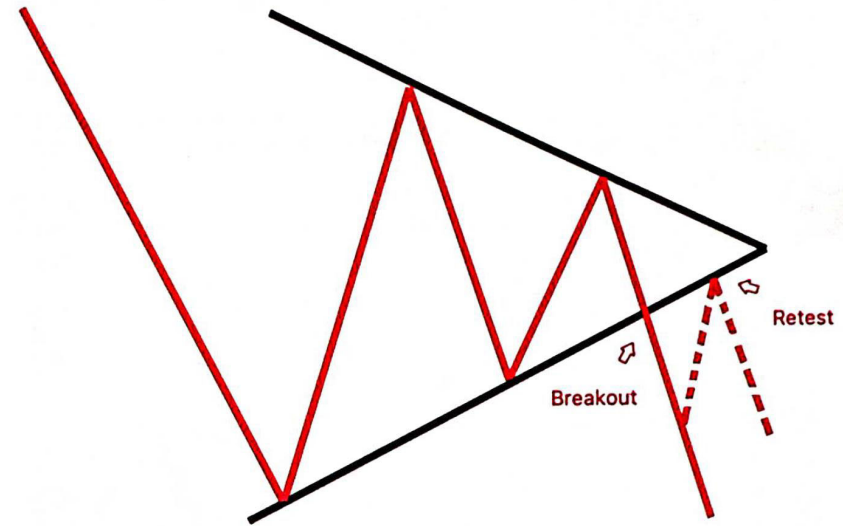
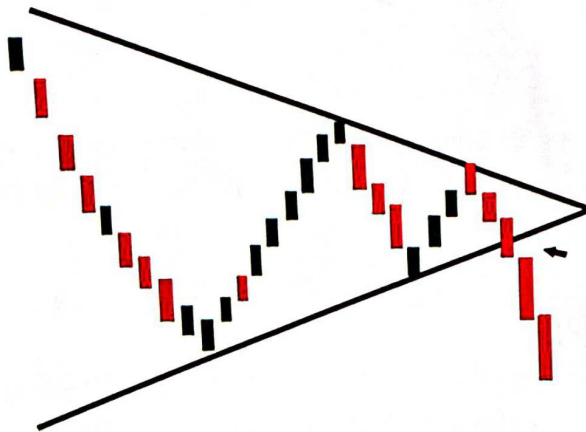
## BULLISH SYMMETRICAL WITH CANDLESTICK CHART



## BULLISH SYMMETRICAL TRIANGLE

A bullish symmetrical triangle is a bullish continuation chart pattern. The pattern is formed by **two converging trend lines that are symmetrical in relation to the horizontal line**. The top line is a bearish trend line creating the resistance, breakout confirmed once chart break resistance & goes upward direction

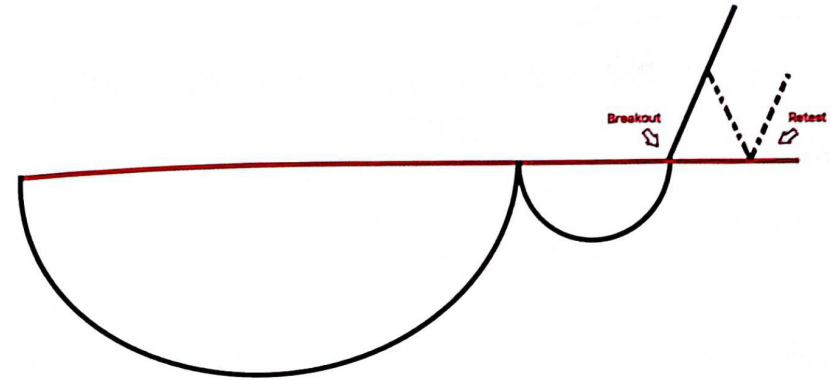
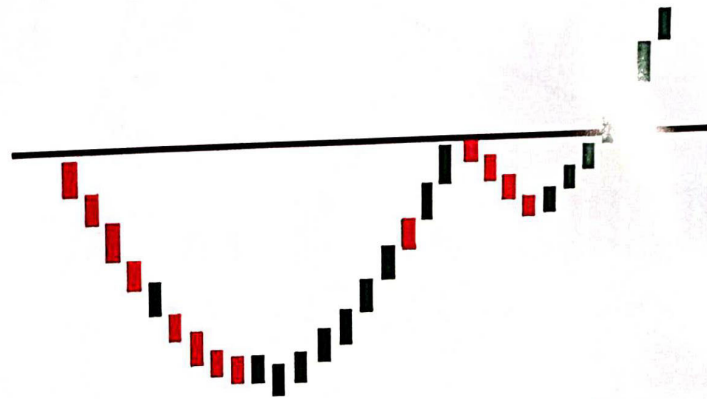
## BEARISH SYMMETRICAL WITH CANDLESTICK CHART



## BEARISH SYMMETRICAL TRIANGLE

A bearish symmetrical triangle is bearish continuation chart pattern. The pattern is formed by two converging trend lines that are symmetrical in relation to the horizontal line, lower support line is bullish trendline, breakout confirmed once it break support & goes in downward direction

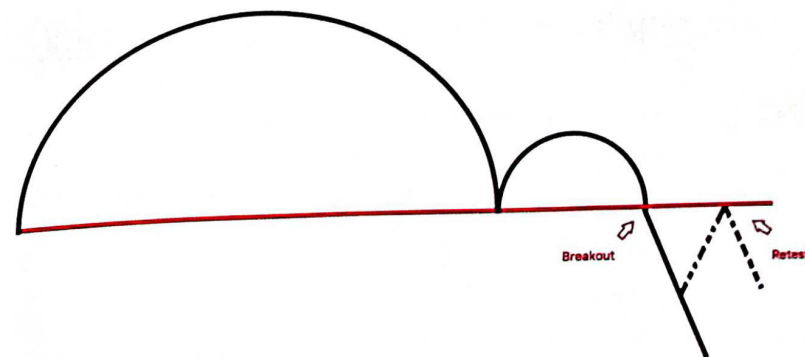
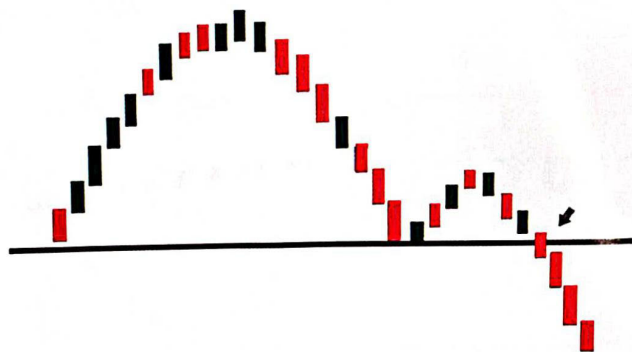
## CUP & HANDLE WITH CANDLESTICK CHART



## CUP & HANDLE PATTERN

A cup and handle is a technical indicator where the price movement of a chart resembles a "tea cup" followed by a downward trending price pattern. This drop, or "handle" is meant to signal a buying opportunity to buy a stock, **breakout confirmed once it break neckline/resistance** & goes upward

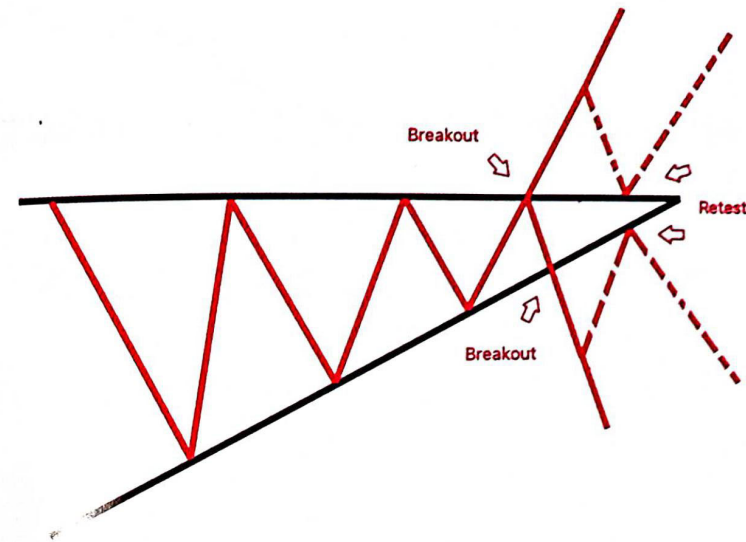
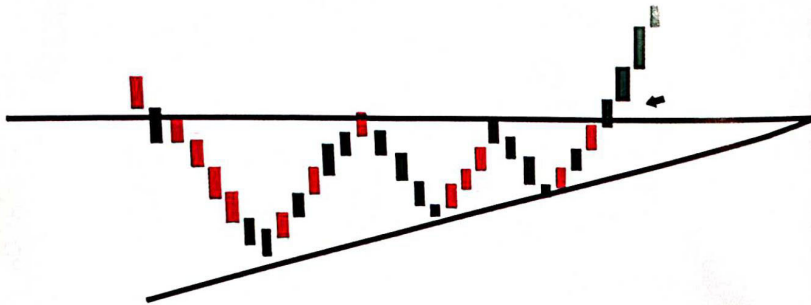
## INVERTED CUP & HANDLE WITH CANDLESTICK CHART



## INVERTED CUP & HANDLE PATTERN

The inverted Cup and Handle pattern forms an upside-down cup and handle. The pattern is formed after a pullback from a swing low before a sell-off to the prior swing low and stalls due to underlying support. The stock then stalls much like a bear flag with slight upward pressure before breaking down below support.

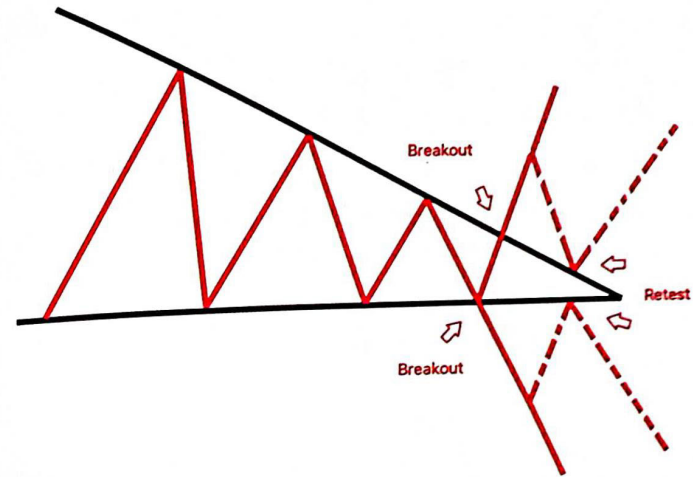
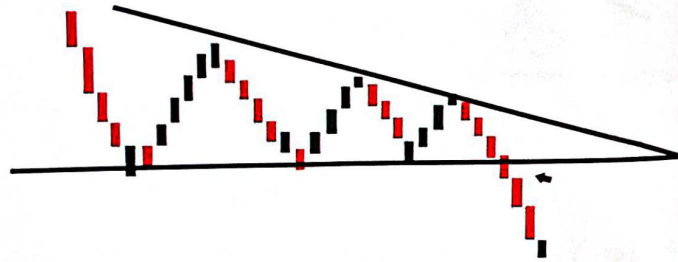
## ASCENDING TRIANGLE WITH CANDLESTICK CHART



## DESCENDING TRIANGLE

It is formed as a right-angled triangle with a resistance and a trendline of higher lows, **resistance does not allow the chart to move more upward, higher lows show that the buying pressure has increased.** pattern clearly indicates that the market moves higher as the higher lows are formed heading toward the resistance line. **it can break from any direction**

## DESCENDING TRIANGLE WITH CANDLESTICK CHART



## DESCENDING TRIANGLE

It is formed in the downtrend and indicates the continuation of the downtrend. formed as a downward sloping triangle with support and a slope of lower highs. support does not allow the chart to move more downward, lower highs show that the selling pressure has increased. **pattern clearly indicates that the market moving lower as the lower highs are formed heading toward the support line.** it can break from any direction

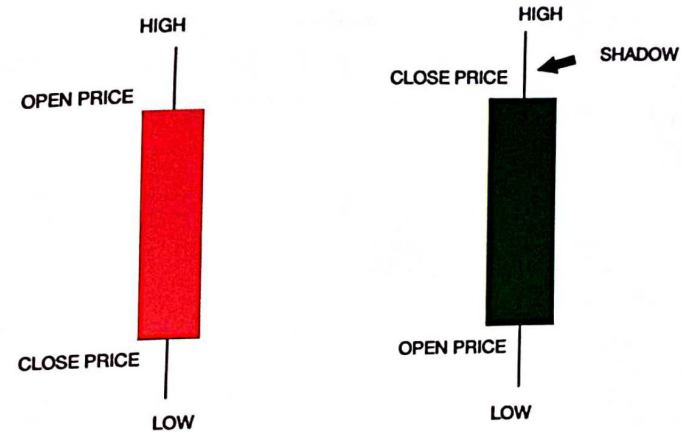
notes

WRITE IN YOUR WORDS TO BE REMEMBER

LET'S LEARN ABOUT  
CANDLESTICK PATTERNS

# notes

WRITE IN YOUR WORDS TO BE REMEMBER



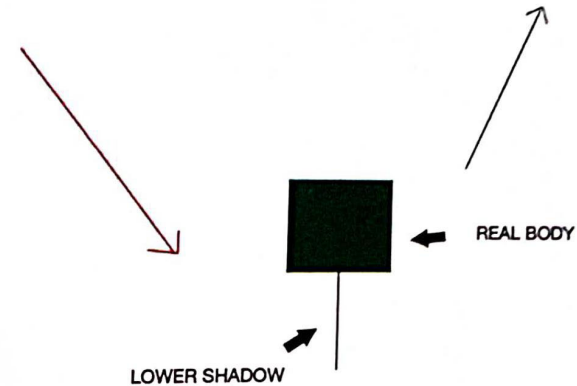
## WHAT IS CANDLESTICK ?

Candlestick shows current mood of market. green candle represent strength / buying & red candle represent weakness / selling.

rectangle part is called as body & thin line passing through body is called as shadow or wick, upper shadow shows the high price and lower shadow shows low price live during session.

notes

WRITE IN YOUR WORDS TO BE REMEMBER

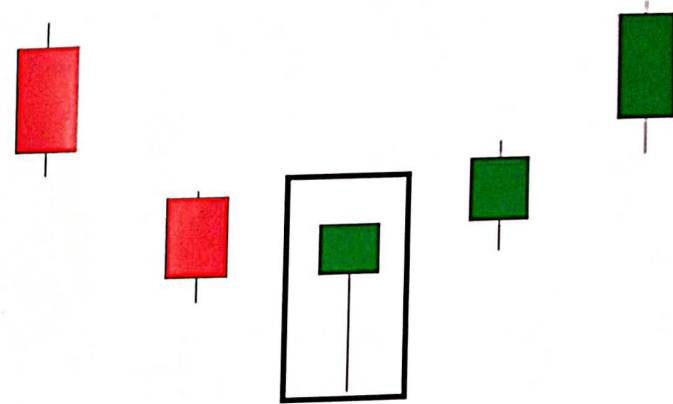


## HAMMER CANDLE

Hammer is single candlestick pattern which occurs at the end of the downtrend & indicates bullish reversal. the body of candle situated at top side with lower shadow which should be double than the body size. this candle has little or no upper shadow.

notes

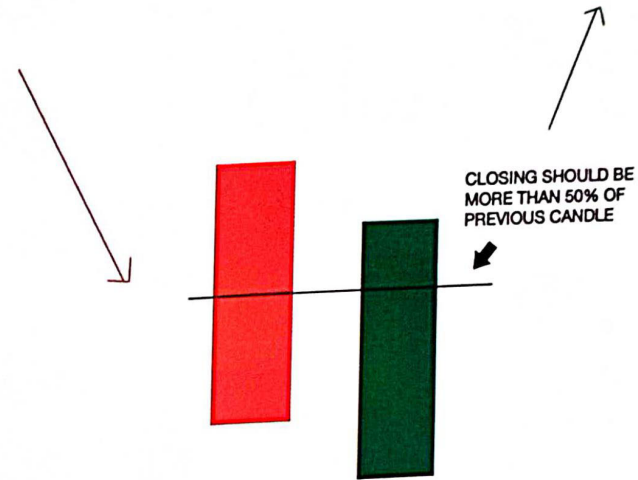
WRITE IN YOUR WORDS TO BE REMEMBER



**HAMMER CANDLESTICK IN  
LIVE CHART**

notes

WRITE IN YOUR WORDS TO BE REMEMBER



## PIERCING PATTERN

Piercing pattern is a two candlestick chart pattern which occurs at downtrend indicates bullish reversal. first candle is bearish then second candle open as gap down but closes above 50% of previous candle. which simply means bull market is starting.

notes

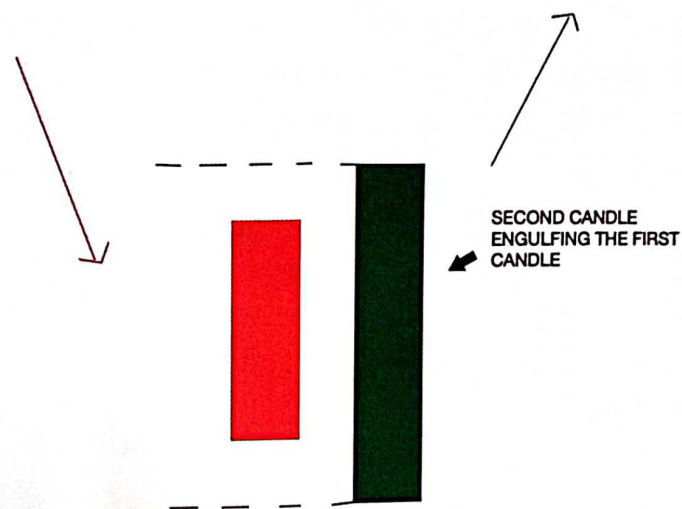
WRITE IN YOUR WORDS TO BE REMEMBER



**PIERCING PATTERN IN LIVE  
CHART**

notes

WRITE IN YOUR WORDS TO BE REMEMBER

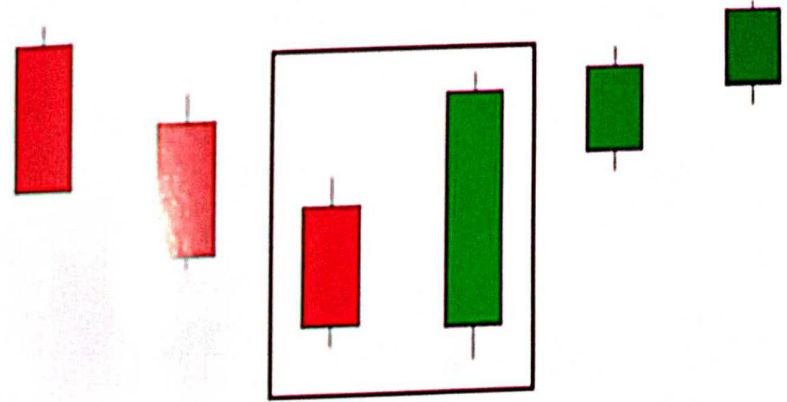


## BULLISH ENGLUFING

Bullish Engulfing pattern is a two candlestick chart pattern which occurs at downtrend, which signals bullish reversal. second candle completely engulfing first candle. engulfing means covering previous candle. second candle is green candle which shows bullish sign.

notes

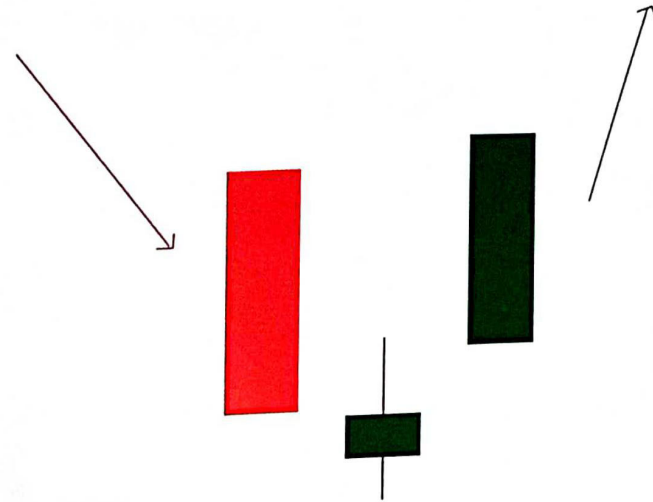
WRITE IN YOUR WORDS TO BE REMEMBER



**BULLISH ENGULFING IN LIVE  
CHART**

notes

WRITE IN YOUR WORDS TO BE REMEMBER

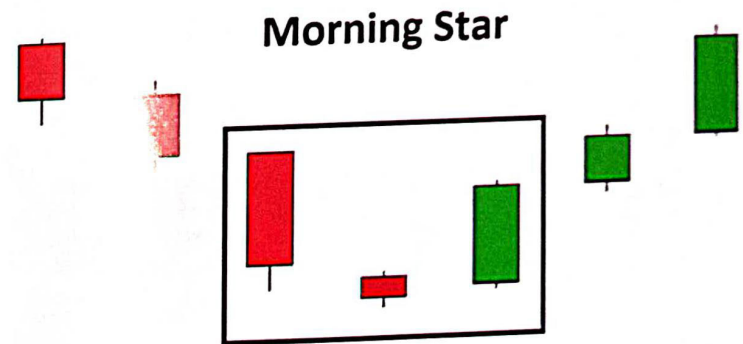


## THE MORNING STAR

The morning star pattern is a multiple candlestick chart pattern which occurs at **downtrend**, which indicates **bullish reversal**.  
its made of three candle first is bearish, second is doji means neutral market & third bullish candle which shows market is ready to go upward.

notes

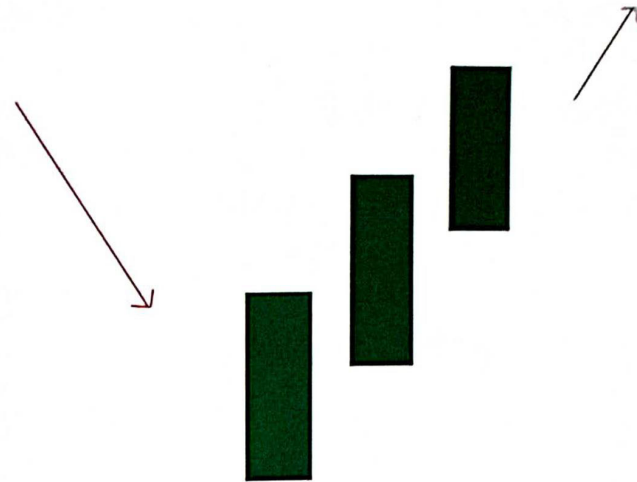
WRITE IN YOUR WORDS TO BE REMEMBER



**MORNING STAR IN LIVE  
CHART**

notes

WRITE IN YOUR WORDS TO BE REMEMBER



## THREE WHITE SOLDIERS

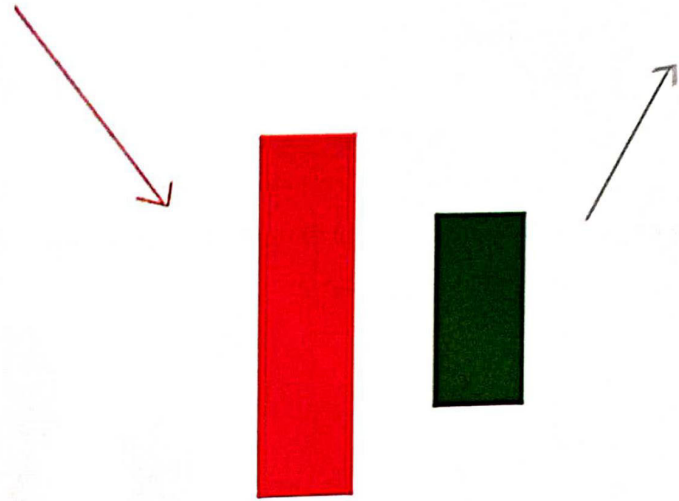
Three white soldiers pattern is a multiple candlestick chart pattern which occurs at **downtrend**, which indicates **bullish reversal**.

its made of three bullish candles. they dont have long shadow's.

every next candle open's within the previos candle's body.

notes

WRITE IN YOUR WORDS TO BE REMEMBER

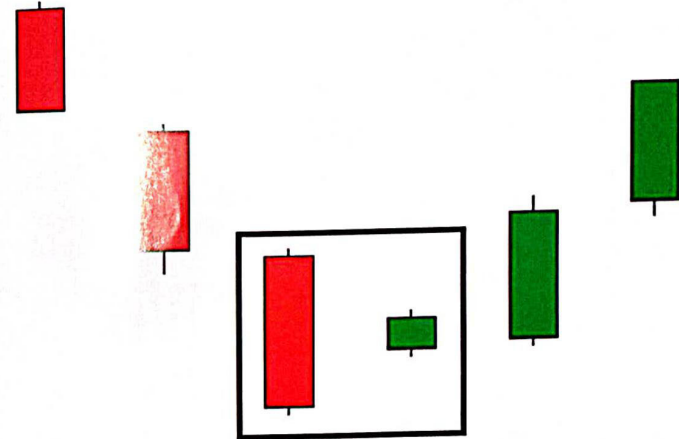


## BULLISH HARAMI

The bullish harami pattern is a two candlestick chart pattern which occurs at downtrend, which indicates bullish reversal. it consist two candle first candle is big red candle and then second is bullish small candle within the range of previous candle's body. first candle shows bearish trend second green candle shows starting of bullish trend.

notes

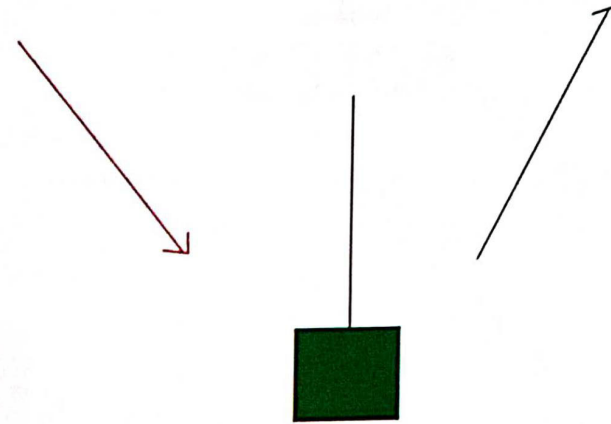
WRITE IN YOUR WORDS TO BE REMEMBER



**BULLISH HARAMI IN LIVE  
CHART**

notes

WRITE IN YOUR WORDS TO BE REMEMBER

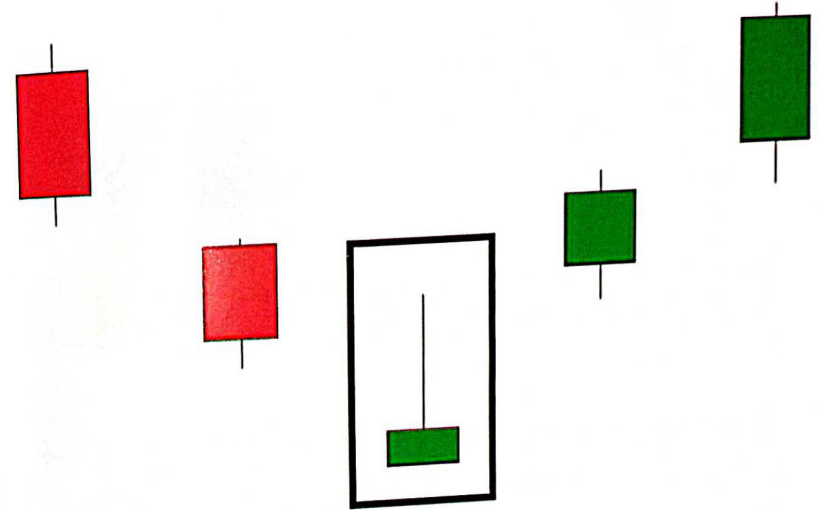


## **INVERTED HAMMER**

Inverted hammer pattern occur at end of downtrend, which indicates bullish reversal. in this candle body situated at end / lower side with big upper shadow, it is inverse of hammer pattern. shadow should be double than the body of candle.

notes

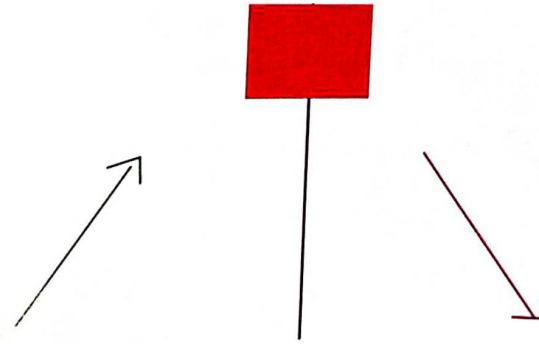
WRITE IN YOUR WORDS TO BE REMEMBER



**INVERTED HAMMER IN LIVE  
CHART**

# notes

WRITE IN YOUR WORDS TO BE REMEMBER



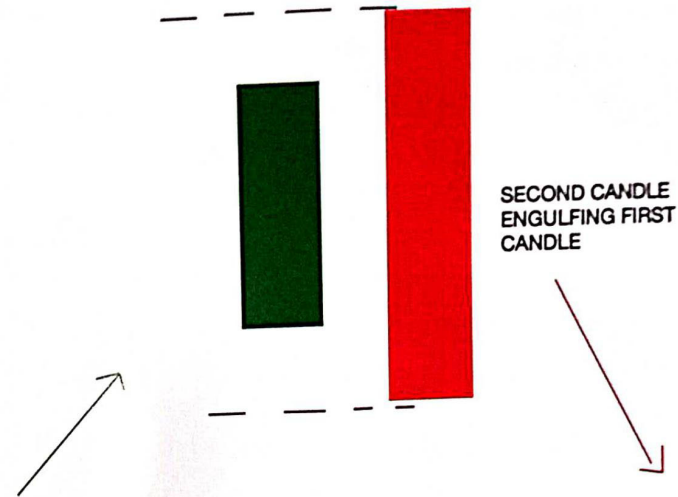
## HANGING MAN PATTERN

Hanging man pattern forms at the end of uptrend, which indicates bearish reversal. body of candle is located at upside and it has long lower shadow which should be doubled the size of body. this candle has no or small upper shadow. it indicates simply market may fall after this. this look like hanging man hats why it called hanging man pattern.



notes

WRITE IN YOUR WORDS TO BE REMEMBER



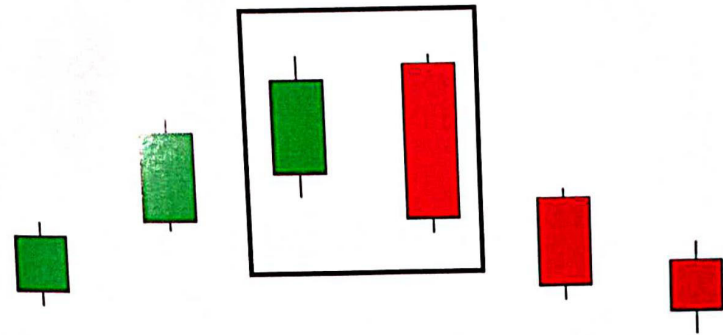
## BEARISH ENGLUFING

Bearish engulfing pattern is two candlestick pattern which occurs at the end of uptrend, which indicates bearish reversal.

it formed by two candle first is green candle second is bearish red candle which engulfing first candle means covering green candle with red candle which means bears are more active & bear market is coming up.

notes

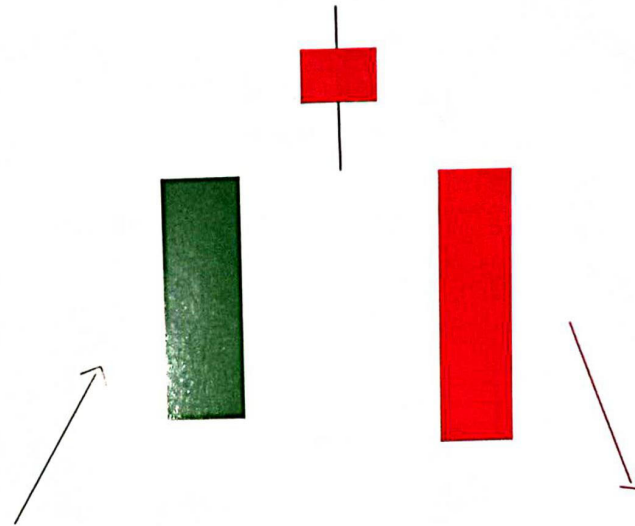
WRITE IN YOUR WORDS TO BE REMEMBER



**BEARISH ENGULFING IN  
LIVE CHART**

notes

WRITE IN YOUR WORDS TO BE REMEMBER



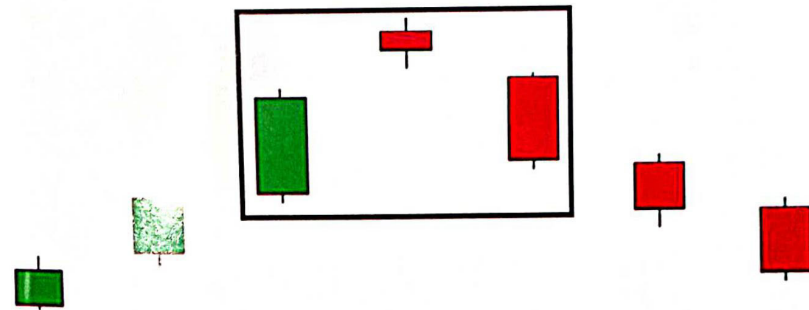
## THE EVEING STAR

The evening star is multiple candlestick pattern which occurs at the end of uptrend, which indicates bearish reversal.

made up of three candle first bullish, second candle is doji means neutral and third is red bearish candle which signals starting of bearish trend. second candle should be completely out of real bodies of first & third candle.

notes

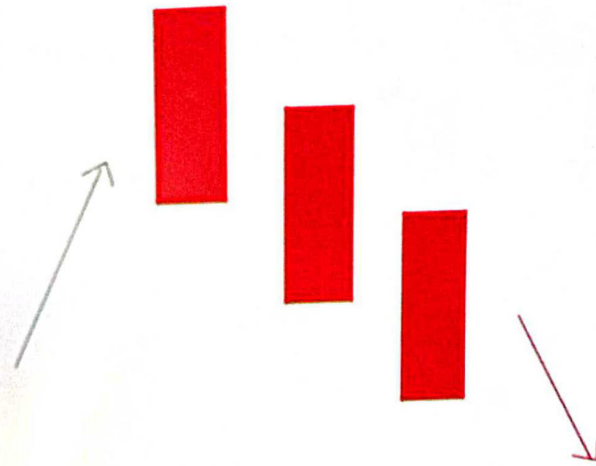
WRITE IN YOUR WORDS TO BE REMEMBER



**THE EVENING STAR IN LIVE  
CHART**

notes

WRITE IN YOUR WORDS TO BE REMEMBER



## THREE BLACK CROWS

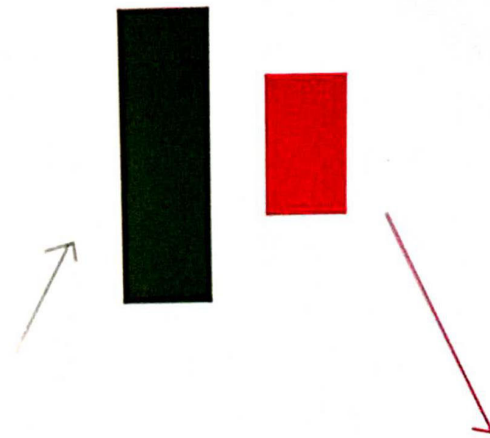
The three black crows is multiple candlestick pattern which occurs at the end of uptrend, which indicates bearish reversal.

consist three red candle which do not have long shadows.

the candle opens within previous candle's body.

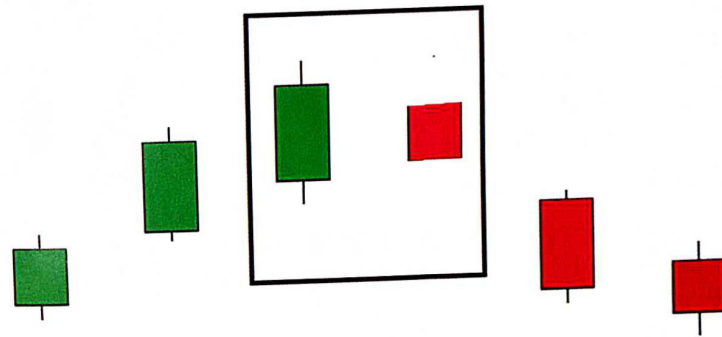
notes

WRITE IN YOUR WORDS TO BE REMEMBER



## BEARISH HARAMI

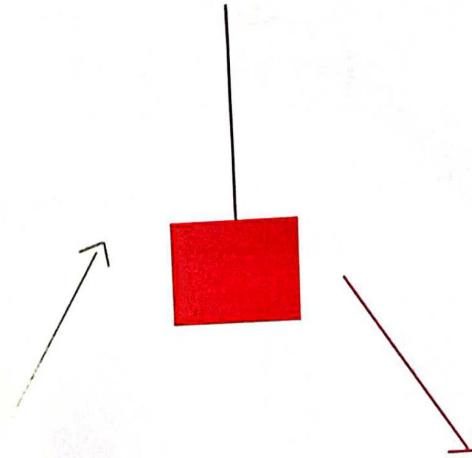
Bearish harami is multiple candlestick pattern which occurs after uptrend, it indicates bearish reversal. It consists of two candles: the first candle is a large bullish candle and the second candle is a small bearish candle which is within the range of the previous bullish candle. This pattern shows that the market may fall now.



**BEARISH HARAMI IN LIVE  
CHART**

notes

WRITE IN YOUR WORDS TO BE REMEMBER



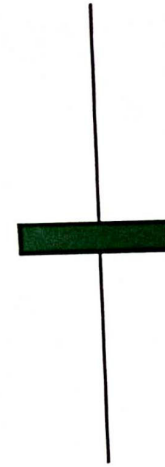
## SHOOTING STAR PATTERN

Shooting star occurs at the end of uptrend, which indicates bearish reversal signal.

in this pattern body is located at lower side and there is long upper shadow. it is inverse of the hanging man candlestick pattern. it is formed when opening & closing price near to each other.

notes

WRITE IN YOUR WORDS TO BE REMEMBER



## DOJI PATTERN

Doji pattern is candlestick pattern of sideways / indecision occurs when opening & closing prices are almost equal. it happens when both the buyers and sellers are fighting but no one wins to take market one side. it has very small body with long shadow.

notes

WRITE IN YOUR WORDS TO BE REMEMBER

## TRADING PSYCHOLOGY TIPS

### #1 AVOID FOMO ( FEAR OF MISSING OUT )

YOU SHOULD NOT TRY TO CATCH EVERY TRADE, YOUR GOAL AS A TRADER IS NOT TO CATCH EVERY TRADE BUT TO FOCUS ON THE QUALITY TRADES WHERE THE RISK REWARD RATIO IS IN YOUR FAVOUR. DAY TRADER DOESN'T MEANS YOU HAVE TO TRADE EVERY DAY, IF THERE IS NO BREAKOUT / SIGNAL THEN RELAX.

### MOVE #2 MOVE ON FROM BAD DAYS

EVERY TRADER HAS BAD DAYS WEEKS AND MONTHS. ACCEPT IT, MOVE ON AND PREPARE FOR NEXT TRADE  
SUCCESSFUL TRADERS OVERCOME ADVERSITY.

# TRADING PSYCHOLOGY TIPS

## #3 DONT CARRY YESTERDAYS BAGGAGE

EVERY DAY START WITH FRESH  
EMPTY MIND WITH CLEAN SLATE,  
DON'T LET ONE TRADE INFLUENCE  
ANOTHER TRADE APPROACH EVERY  
TRADE AS IF IT'S THE START OF THE  
DAY.

## #4 DON'T DO OVER-TRADING

ARE YOU CONTROLLING YOUR TRADING  
OR TRADING TERMINAL IS  
CONTROLLING YOU.  
TRADING CAN BE ADDICTING AND ITS  
EASY TO STUCKED INTATETRESSFUL  
TRADES. FOCUS ONG T LIFE  
BALANCE & MAKE SIROLICU ARE  
BUILDING SUSTAINAUNSTABITS.

# THANK YOU !!

COMZ GURA